



Chikungunya virus(CHIKV)/ECSA lineage strain E2/Envelope 2 Antibody AP-C101

Product Overview

This product employs recombinant E2 glycoprotein from the Chikungunya virus (ECSA genotype) to immunize BALB/c mice. Utilizing hybridoma technology, a **specific murine monoclonal antibody cell line** (Clone ID: **1B7-H7**) producing antibodies against the Chikungunya virus E2 protein was generated. High-purity murine monoclonal antibody was obtained via purification using Protein A/G affinity chromatography.

The validated murine monoclonal antibody against the Chikungunya virus E2 protein (designated **1B7**) is applicable for Enzyme-Linked Immunosorbent Assay (ELISA), Western Blotting (WB), and Immunofluorescence Assay (IFA). This enables comprehensive support for Chikungunya virus fundamental research and diagnostic product development.

General Information

Immunogen:	Recombinant Chikungunya virus(CHIKV) (Ross strain), E2/Envelope protein 2
Preparation:	This antibody was produced from a hybridoma resulting from the fusion of a mouse myeloma with B cells obtained from a mouse immunized with purified, recombinant Chikungunya virus (CHIKV) (strain Ross) E2 / Envelope 2. The IgG fraction of the cell culture supernatant was purified by Protein A/G affinity chromatography.
Ig Type:	Monoclonal Mouse Clone1B7#
Clone ID:	1B7-H7
Purification	Protein A/G
Specificity:	Chikungunya virus (CHIKV) E2/ Envelope 2 Protein
Formulation:	0.2 μm filtered solution in PBS
Concentration:	1mg/mL
Applications:	WB 、 ELISA、 IFA

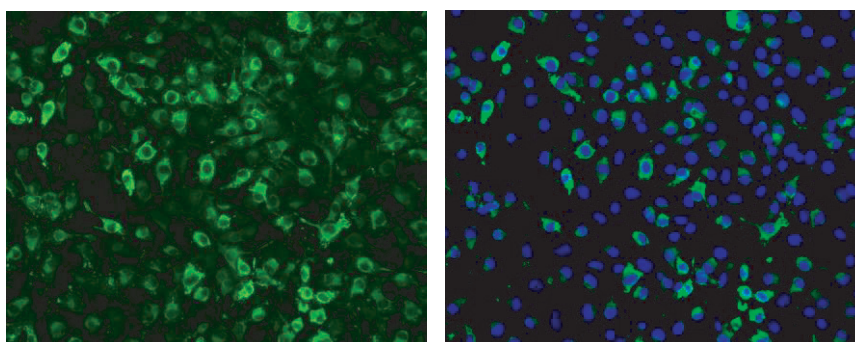
Recommended Concentration

Western Blot:	1:2000-1:5000
IFA:	1:2000-1:5000
ELISA:	1:5000-1:10000

*Please Note: Optimal concentrations/dilutions should be determined by the end user.

Storage

This antibody can be stored at 2°C - 8°C for one month without detectable loss of activity. Antibody products are stable for twelve months from date of receipt when stored at -20°C to -80°C. Preservative-Free. Avoid repeated freeze-thaw cycles.



A: CHIKV

B: Merge

Anti-Chikungunya virus(CHIKV)/Ross strain, E2/Envelope 2 antibody at 1/2000 dilution

Sample: BHK cells infected with Chikungunya virus (Ross strain) for 48 hours

Secondary

Goat Anti-Mouse IgG(H+L)/FITC (ab6785) at 1/5000 dilution.

DAPI at 1/10000.

A: The image captured in the Green fluorescence channel (488nm)

B: The image obtained by Merge the green fluorescence channel (488nm) and the blue fluorescence channel (405nm)